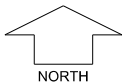


# EMERALD PARK STAGE 6



SCALE 1:250

**MNG**. Ref: 94984lip-228c Date: 25/06/2018  
 All dimensions and areas are subject to survey. The particulars on this brochure are supplied for information only and shall not be taken as a representation in any respect on the part of the Vendor or its agent. Authorities should be consulted when services are contained within lot boundaries as building restrictions may apply. All retaining walls and associated easements are shown exaggerated for clarity.  
 The BALs/bushfire setbacks notated are indicative only based on the approved FMP and will be confirmed as part of BAL compliance/reassessment prior to dwelling construction.

## LEGEND

- |                               |                             |                                   |                            |
|-------------------------------|-----------------------------|-----------------------------------|----------------------------|
| WATER                         | POWER DOME MINI PILLAR      | RETAINING WALL & HEIGHT           | SPOT LEVEL                 |
| WATER METER/ DEFERRED SERVICE | POWER DOME UNIVERSAL PILLAR | NOISE WALL                        | PAD LEVEL                  |
| VALVE / HYDRANT               | STREETLIGHTS                | QUIET HOUSE DESIGN                | ROAD LEVEL                 |
| SEWER                         | PADMOUNT SITE               | ACCESS RESTRICTION                | GARAGE LOCATION            |
| DRAINAGE                      | FOOTPATH                    | INDICATIVE BUSHFIRE ATTACK LEVELS | NATIONAL BROADBAND NETWORK |
| BIN PAD                       |                             | INDICATIVE BUSHFIRE ATTACK LEVELS |                            |