

Home For Sale

13 Breccia Parade, Wellard

Priced From \$399,000*

emerald park
PRIVATE ESTATE



Ready-Built Homes Available



Features:

- Full landscaping to the front and rear of the home
- 600mm kitchen appliances
- Stone bench tops to kitchen
- Feature tiles to shower
- 31c high ceilings to kitchen, dining and living
- Built-in robes to all bedrooms
- LED down lights throughout the entire home
- Smart home adaptable technology
- 6 Star energy efficiency rated design

Local Amenities:

- 30 minutes to Perth's CBD
- Two adventure playgrounds
- Jellybeans Childcare Centre
- Minutes to Wellard Train Station
- District Sports Oval
- Wellard Primary School



Enjoy the benefits of a Ready-Built home

- MOVE-IN READY ALL INCLUSIVE LOW DEPOSIT EASY PROCESS

A PARTNERSHIP FROM

NOW living.



Priya Naidu

m 0425 604 138 t 6461 5144

priya@nowlivingrealty.com.au

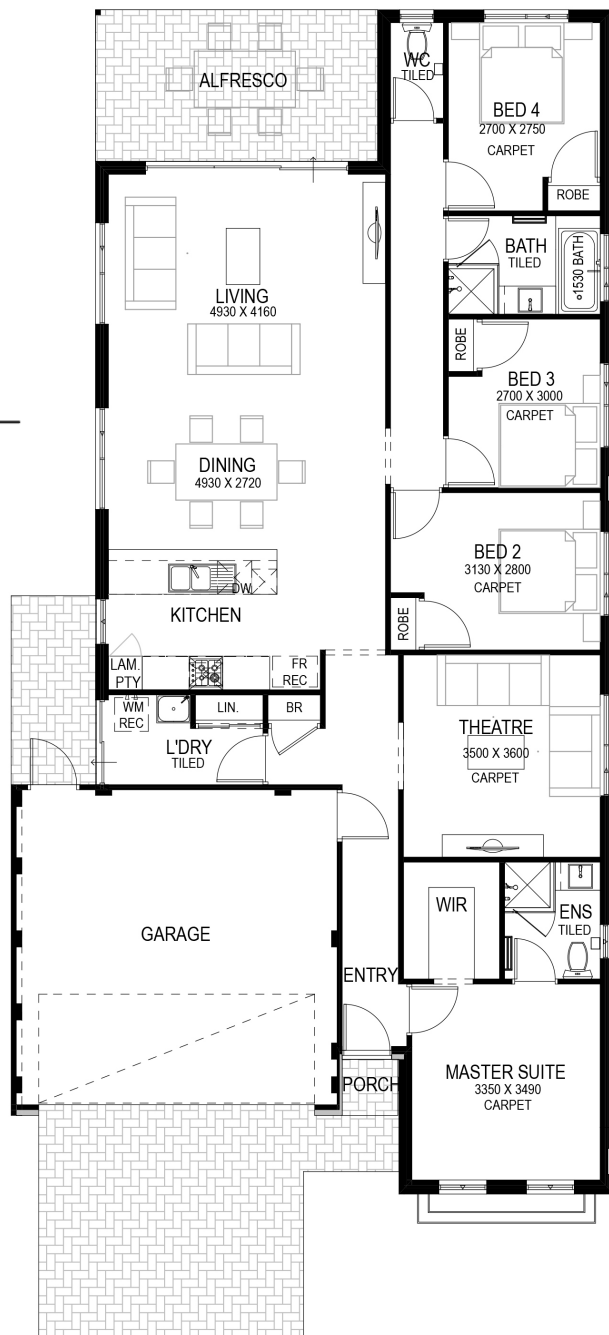
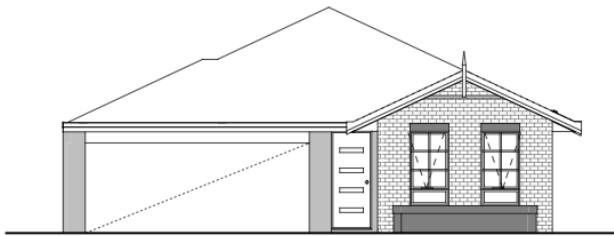
Level 3, 6 Bennett Street East Perth WA 6004 nowlivingrealty.com.au

**Now
Living
Realty.**

Home For Sale

13 Breccia Parade, Wellard
Priced From \$399,000*

emerald park
PRIVATE ESTATE



*Prices subject to change. Base price only. Terms & Conditions apply. See website for full list of inclusions. Image for illustrative purposes only. Now Living BC 6415.

Priya Naidu
m 0425 604 138 t 6461 5144
priya@nowlivingrealty.com.au

Level 3, 6 Bennett Street East Perth WA 6004 nowlivingrealty.com.au

