

# House & Land Package



Lot 706 | Lot Size 210m<sup>2</sup> | Frontage 7.5m



## THE ARTISTE

# \$324,800\*

Set on 210 m<sup>2</sup> this home boasts 3 bedrooms, ideal for working professionals or families who are looking for cosmopolitan living. This home also features:

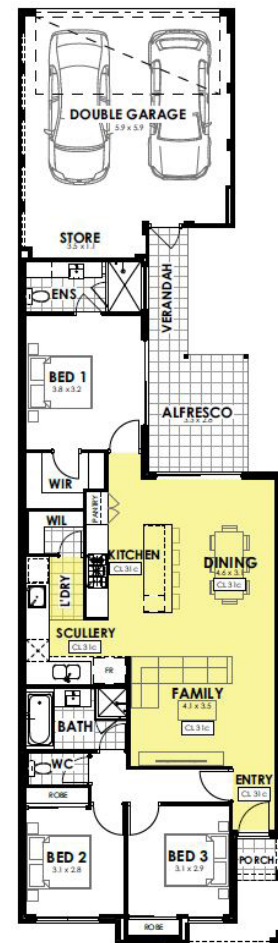
- 5.1kw solar package
- Fully ducted reverse cycle air conditioning
- LED down light package
- Caesarstone kitchen benchtops
- Carpets and floor tiling and window treatments
- Home security package

For more information please contact

**Ian Hatfield**  
**0410 341 445** or  
**ianh@shelford.com.au**

**emeraldpark**  
PRIVATE ESTATE

**emeraldpark.com.au**



\*The builder is not the owner of the land, and has permission from Cedar Woods Properties Ltd to advertise the land for the price specified. Land prices and availability are subject to change without notice and do not include stamp duty, settlement fees, or any other disbursements required for settlement. Terms and conditions apply. All area and dimensions are subject to survey. Site costs quoted are allowances only and are subject to change on the basis of survey and engineer reports. The images displayed are for illustrative purposes only and may include some features, fixtures and landscaping not supplied as part of this package. To obtain details of the design specification, package inclusions, or alternate designs to suit this block please contact the builder. Design and specification are subject to compliance with developer's covenants. Price was correct at the time of printing (17/01/2020) and the land was still available for sale. \*From price, includes \$10,000 First Home Owners grant which is available to eligible purchasers only.

