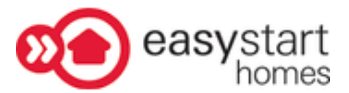


# House & Land Package



Lot 393 | Lot Size 396m<sup>2</sup> | Frontage 12.5m



## MUSE

# \$352,500\*

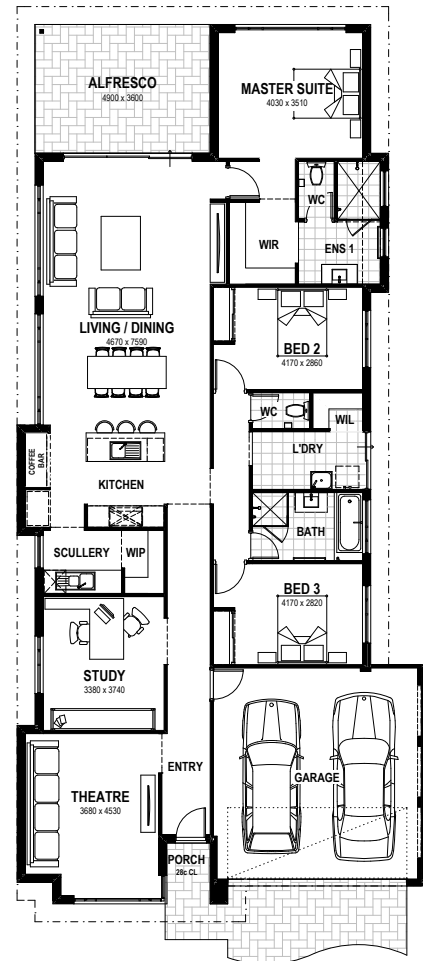
Set on 396m<sup>2</sup> this home boasts 3 bedrooms and is a great home to entertain in with a theatre, study and alfresco and features:

- Elevation included
- Full floor coverings and blinds to all windows
- Stainless steel appliances
- Large study that can be converted into 4th bedrooms
- Large kitchen with scullery and coffee bar
- Soakwells, crossover, concrete pump included in siteworks

For more information please contact

**Brian Belnick**  
0413 180 018 or  
brianb@summithomes.com.au

**emeraldpark**  
PRIVATE ESTATE



\*The builder is not the owner of the land, and has permission from Cedar Woods Properties Ltd to advertise the land for the price specified. Land prices and availability are subject to change without notice and do not include stamp duty, settlement fees, or any other disbursements required for settlement. Terms and conditions apply. All area and dimensions are subject to survey. Site costs quoted are allowances only and are subject to change on the basis of survey and engineer reports. The images displayed are for illustrative purposes only and may include some features, fixtures and landscaping not supplied as part of this package. To obtain details of the design specification, package inclusions, or alternate designs to suit this block please contact the builder. Design and specification are subject to compliance with developer's covenants. Price was correct at the time of printing (26/03/2020) and the land was still available for sale.  
\*From price, includes \$10,000 First Home Owners grant which is available to eligible purchasers only.